

A cost effective range of KTM quality ball valves, yet providing excellent performance and reliability

Features

- Superb valve design, yet competitive
- Designed and manufactured to major international standards
- Excellent stem sealing mechanism - Double packing and live loaded spring ensure long service life and low emission
- Anti-cold flow - Integral seat lip eliminates seat deformation and cold flow
- ISO 5211 actuator mounting pad
- Blow-out proof stem
- Static electricity grounding device
- Two piece, split body ball valve with flanged ends
- Automatic cavity pressure relief
- Key lock
- Fire tested to API 607 4th edition (optional)
- Fugitive emission certified by TA-LUFT
- Meets BS 5351 where applicable

General applications

- Chemical
- Petrochemical
- Oil & gas
- Pulp & paper
- Food & beverage
- Machinery and equipment
- Air conditioning facilities
- General piping



Technical data

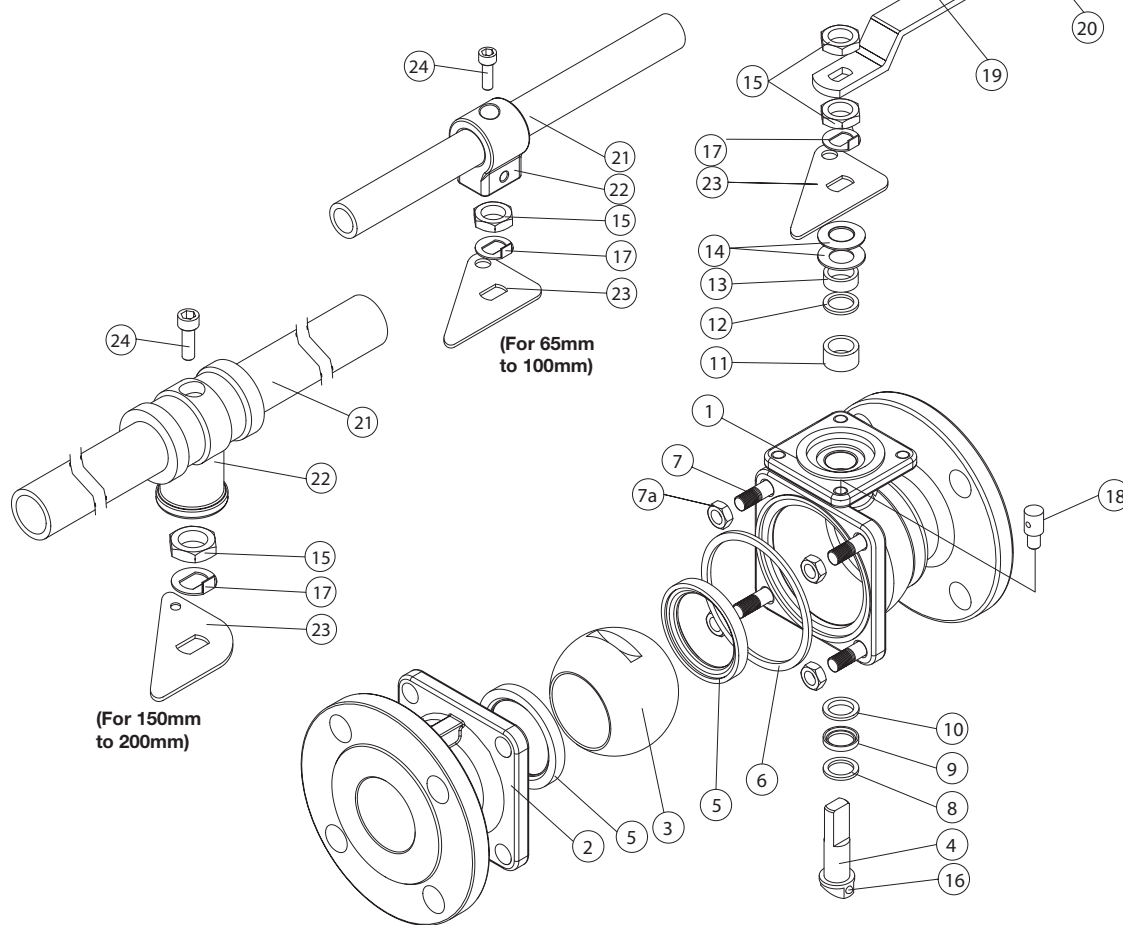
Sizes	: Full bore 15mm to 100mm (1/2" to 4")
Material	: Stainless steel
Temperature	: -20°C to +204°C
End connection	: JIS 10K
Face to face	: JIS B2002, ASME B16.10
Test pressure	: Body 2.07 MPa Seat 1.60 MPa
Maximum operating pressure	: 1.37 MPa

KTM SB-11 JIS Floating Ball Valves

Two piece split body ball valve

Handle for valve size
65mm to 100mm

Handle for valve size
15mm to 50mm

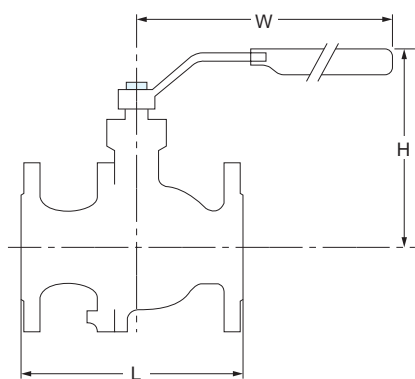


Materials of Construction

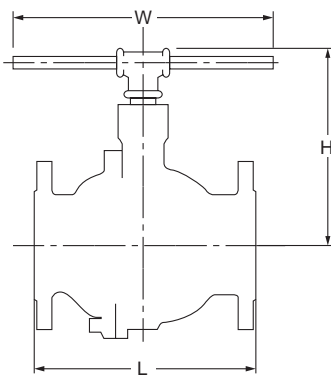
No	Part Name	304 Stainless Body	Qty
1	Body	SCS13A	1
2	Cap	SCS13A	1
3	Ball	SCS14A	1
4	Stem	SUS316	1
5	Seat	PTFE	2
6 *	Body Seal	PTFE	1
7	Stud	A193 Gr B8	4-12
7a	Nut	A194 Gr 8	4-12
8	Lower Thrust Washer	50%SS/50%PTFE	1
9	Compress Ring	SUS 316	1
10 *	Upper Thrust Washer	R-PTFE	1
11 *	V-ring Stem Packing	PTFE	1 set
12	Thrust Washer	50%SS/50% PTFE	1
13	Gland	SUS304	1
14	Belleville Washer	SUS301	2
15	Stem Nut	SUS304	1-2
16	Static Ball	SUS304	1
17	Lock Saddle	SUS304	1
18	Stop Bolt	SUS304	1
19	Handle (1/2" to 2")	SUS304	1
20	Handle Sleeve (1/2" to 2")	Vinyl	1
21	Handle (2 1/2" to 4")	SGP Zn Plating	1
22	Handle Adapter (2 1/2" to 4")	CF8	1
23	Triangle Stopper	SUS304	1
24	Bolt (2 1/2" to 4")	SUS304	1

KTM SB-11 JIS Floating Ball Valves

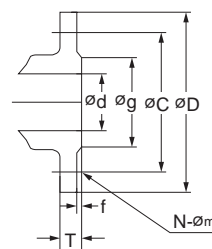
Two piece split body ball valve



Size 15mm to 50mm
(1/2" to 2")



Size 65mm to 100mm
(2 1/2" to 4")



Flange End

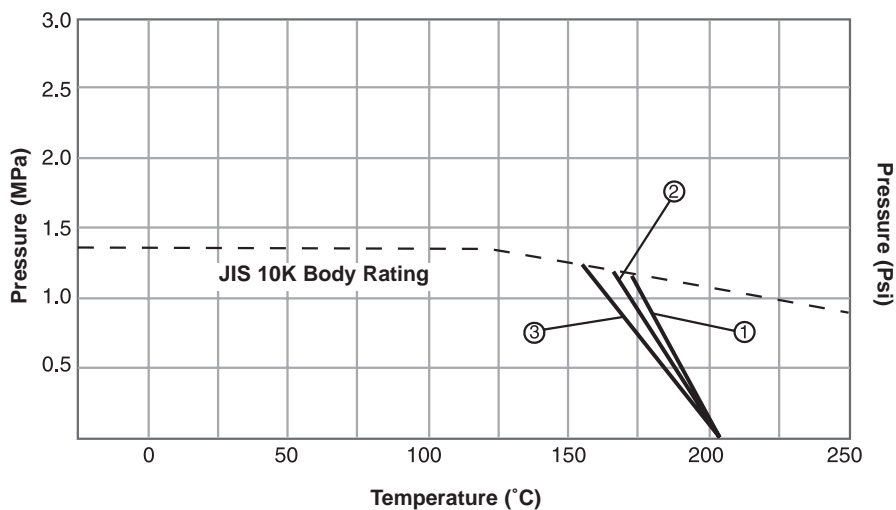
D : Flange outside diameter
C : Bolt pitch circle
g : Raised face diameter
f : Raised face height
d : Bore diameter
T : Flange thickness
N : Number of bolt
m : Bolt hole diameter

JIS 10K Dimensions (mm)

Valve Size (mm)	d	L	H	W	D	C	g	f	T	N	m	weight (Kg)
15	15	108	90.0	125	95	70	51	1	12	4	15	2
20	20	117	93.5	125	100	75	56	1	14	4	15	3
25	25	127	104.0	151	125	90	67	1	14	4	19	4
40	38	165	124.5	184	140	105	81	2	16	4	19	7
50	50	178	133.0	184	155	120	96	2	16	4	19	8
65	64	190	162.0	495	175	140	116	2	18	4	19	14
80	76	203	172.0	495	185	150	126	2	18	8	19	18
100	100	229	197.0	595	210	175	151	2	18	8	19	27

Pressure-Temperature Rating (T-Seat)

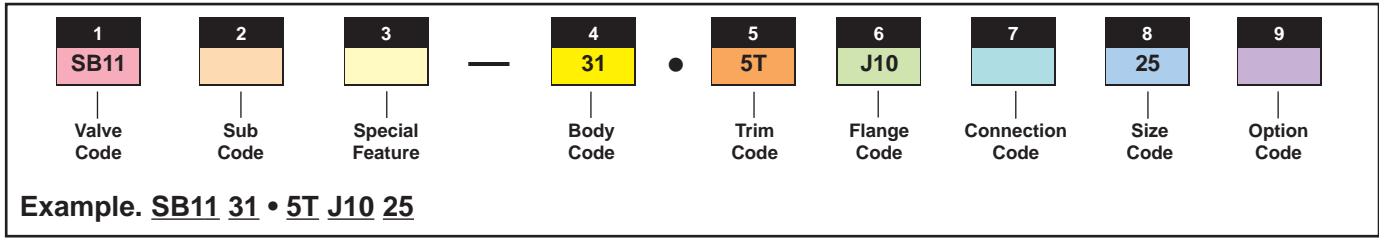
- ① Valve Size 15mm to 20mm
- ② Valve Size 25mm to 65mm
- ③ Valve Size 80mm to 100mm



KTM SB-11 JIS Floating Ball Valves

Two piece split body ball valve

New KTM Model Coding System



1		
Valve Code	Class	Description
SB11	JIS 10K	Full bore, Floating type

6	
Flange Code	Description
J10	JIS 10K

2	
Sub Code	Description
Blank	Soft Seat

7	
Connection Code	Description
Blank	Raised Face

3	
Special Features	Description
Blank	No Special Feature

8		
Size Code	mm	inch
15	15	1/2
20	20	3/4
25	25	1
40	40	1 1/2
50	50	2
65	65	2 1/2
80	80	3
100	100	4

4	
Body Code	Description
31	SCS13A (304)

5				
Trim Code	Ball	Seat	Packing	Stem
5T	SCS14A	PTFE	PTFE	316

* Trim Code is inclusive of "Ball, Seat, Packing and Stem"

9	
Option Code	Description
Blank	No additional option