

A cost effective range of KTM quality ball valves, yet providing excellent performance and reliability

Features

- Superb valve design, yet competitive
- Designed and manufactured to major international standards
- Excellent stem sealing mechanism - Double packing and live loaded spring ensure long service life and low emission
- Anti-cold flow - Integral seat lip eliminates seat deformation and cold flow
- ISO 5211 actuator mounting pad
- Blow-out proof stem
- Static electricity grounding device
- Two piece, split body ball valve with flanged ends
- Automatic cavity pressure relief
- Key lock
- Fire tested to API 607 4th edition (optional)
- CE marking to PED 97/23/EC (optional)
- Fugitive emission certified by TA-LUFT
- Conforms to BS 5351 up to 4"

General applications

- Chemical
- Petrochemical
- Oil & gas
- Pulp & paper
- Food & beverage
- Machinery and equipment
- Air conditioning facilities
- General piping

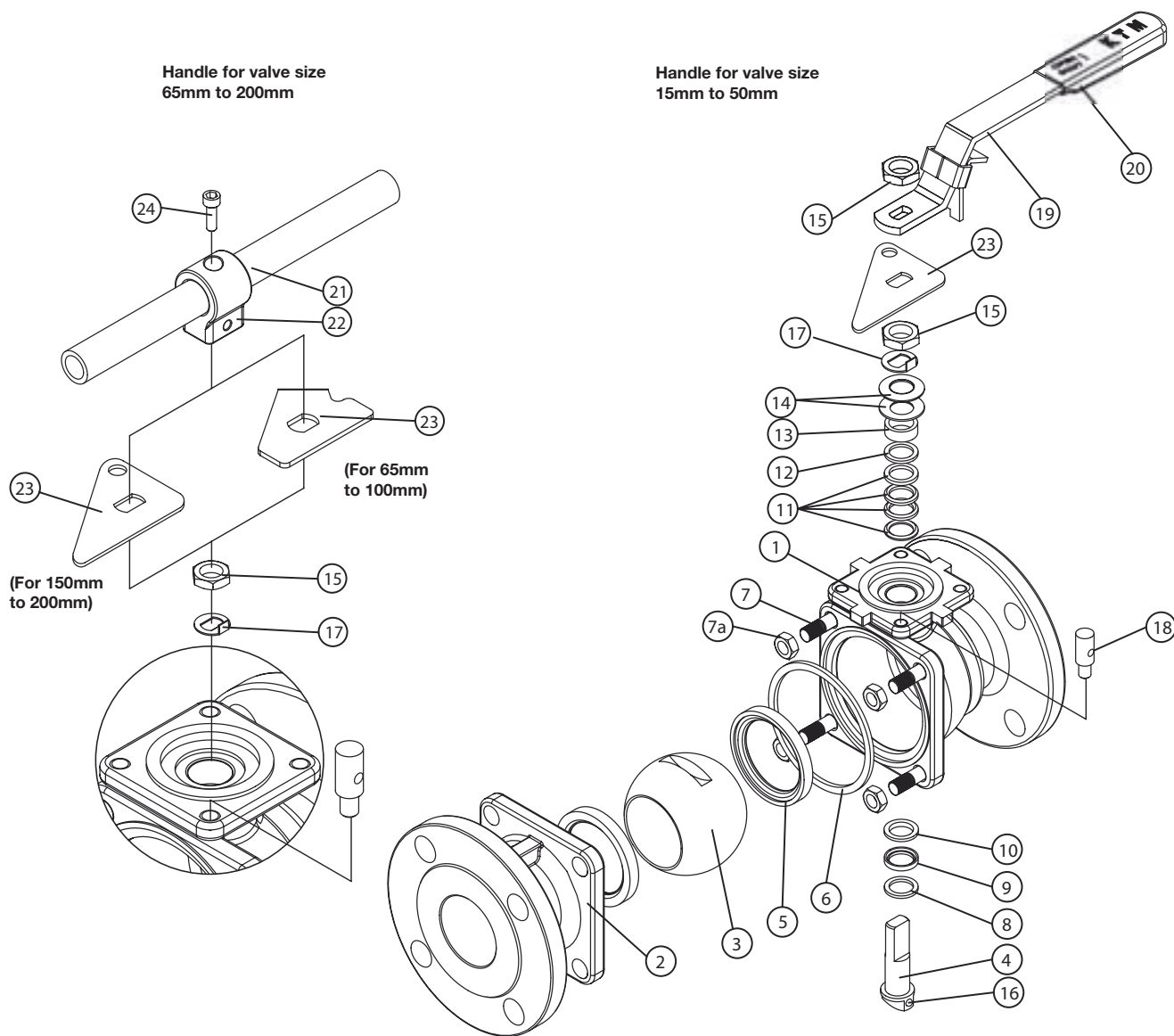


Technical data

Sizes	: Full bore 15mm to 200mm (1/2" to 8")
Material	: Stainless steel / Carbon steel
Temperature	: -29°C to +232°C
End connection	: ASME Class 150
Face to face	: ASME B16.10
Test pressure	: SS Body - 425 psi (2.93 MPa) CS Body - 450 psi (3.10 MPa) Seat - 333 psi (2.30 MPa)
Maximum operating pressure	: SS - 275 psi (1.90 MPa) CS - 290 psi (2.00 MPa)

KTM SB-11 ASME Floating Ball Valves

Two piece split body ball valve



Materials of Construction

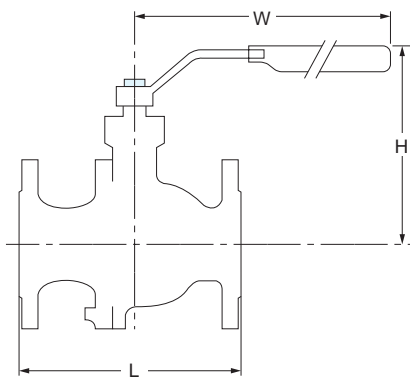
No	Part Name	Materials		Qty
		Stainless Steel Body	WCB Body	
1	Body	A351 Gr CF8M	A216 Gr WCB	1
2	Cap	A351 Gr CF8M	A216 Gr WCB	1
3	Ball	A351 Gr CF8M	A351 Gr CF8M	1
4	Stem	A 276 Type 316	A 276 Type 316	1
5	Seat	PTFE / PFA Copolymer	PTFE / PFA Copolymer	2
6*	Body Seal	PTFE	PTFE	1
7	Stud	A 193 Gr B8	A 193 Gr B7	4-12
7a	Nut	A 194 Gr 8	A 194 Gr 2H	4-12
8	Lower Thrust Washer	50%SS / 50%PTFE	50%SS / 50%PTFE	1
9	Compress Ring	SUS316	SUS316	1
10*	Upper Thrust Washer	Reinforced PTFE	Reinforced PTFE	1
11*	V-ring Stem Packing	PTFE	PTFE	1 set
12	Thrust Washer	PEEK	PEEK	1
13	Gland	SUS304	SUS304	1
14	Belleville Washer	SUS301	SUS301	2
15	Stem Nut	SUS304	SUS304	1-2
16	Static Ball	SUS304	SUS304	1
17	Lock Saddle	SUS304	SUS304	1
18	Stop Bolt	SUS304	SUS304	1
19	Handle (1/2" to 2")	SUS304	SUS304	1
20	Handle Sleeve (1/2" to 2")	Vinyl	Vinyl	1
21	Handle (2 1/2" to 8")	SGP Zn Plating	SGP Zn Plating	1
22	Handle Adapter (2 1/2" to 8")	CF8 (2 1/2" to 4")	A536 (6" to 8")	1
23	Triangle Stopper	SUS304	SUS304	1
24	Bolt (2 1/2" to 8")	SUS304	SUS304	1

Note

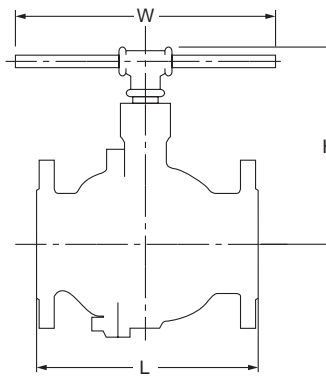
- a. Part number 6*, 10* and 11* (Option) — For fire tested to API 607 4th edition version, material shall be changed to Graphite.
- b. Other body materials available.

KTM SB-11 ASME Floating Ball Valves

Two piece split body ball valve

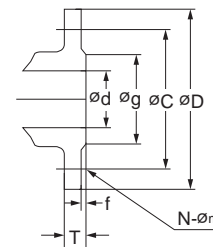


Size 15mm to 50mm
(1/2" to 2")

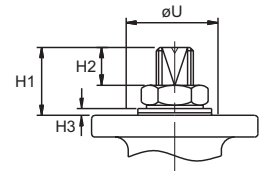


Size 65mm to 200mm
(2 1/2" to 8")

D : Flange outside diameter
C : Bolt pitch circle
g : Raised face diameter
f : Raised face height
d : Bore diameter
T : Flange thickness
N : Number of bolt
m : Bolt hole diameter



Flange End



Top Works

ASME Class 150 Dimensions (mm)

Valve Size (mm)	d	L	H	W	D	C	g	f	T	N	m	H1	H2	H3	SW	U	ISO	M	weight (Kg)
15	15	108	90.0	125	89	60.5	35	1.6	11.2	4	16	22.5	12.0	2	6.3	30	F04	M5	2
20	20	117	93.5	125	98	70.0	43	1.6	11.2	4	16	22.0	12.5	2	6.3	30	F04	M5	3
25	25	127	104.0	151	108	79.5	51	1.6	11.2	4	16	23.5	13.0	3	8.0	35	F05	M6	4
40	38	165	124.5	184	127	98.5	73	1.6	14.3	4	16	27.0	14.0	3	9.5	55	F07	M8	7
50	50	178	133.0	184	152	120.5	92	1.6	15.9	4	19	27.0	14.0	3	9.5	55	F07	M8	8
65	64	190	162.0	495	178	139.5	105	1.6	17.5	4	19	46.0	24.5	3	17.0	70	F10	M10	14
80	76	203	172.0	495	190	152.5	127	1.6	19.1	4	19	46.0	25.0	3	17.0	70	F10	M10	18
100	100	229	197.0	595	229	190.5	157	1.6	23.9	8	19	52.0	30.0	3	17.0	70	F10	M10	27
150	150	394	280.0	800	279	241.5	216	1.6	25.4	8	22	68.0	41.0	3	23.0	85	F12	M12	75
200	201	457	315.0	1,100	343	298.5	270	1.6	28.6	8	22	68.0	41.0	3	23.0	85	F12	M12	128

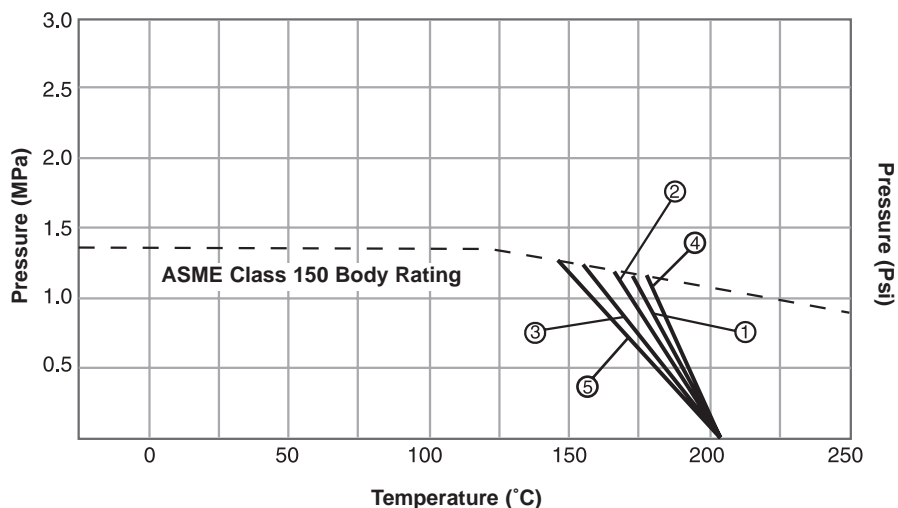
ASME Class 150 Dimensions (inch)

Valve Size (inch)	d	L	H	W	D	C	g	f	T	N	m	H1	H2	H3	SW	U	ISO	M	weight (lbs)
1/2"	0.59	4.25	3.54	4.92	3.50	2.38	1.38	0.06	0.44	4	0.62	0.89	0.47	0.08	0.25	1.18	F04	M5	4
3/4"	0.79	4.62	3.68	4.92	3.88	2.75	1.69	0.06	0.44	4	0.62	0.87	0.49	0.08	0.25	1.18	F04	M5	7
1"	1.00	5.00	4.09	5.94	4.25	3.12	2.00	0.06	0.44	4	0.62	0.93	0.51	0.12	0.31	1.38	F05	M6	9
1 1/2"	1.50	6.50	4.90	7.24	5.00	3.88	2.88	0.06	0.56	4	0.62	1.06	0.55	0.12	0.37	2.17	F07	M8	15
2"	2.00	7.00	5.24	7.24	6.00	4.75	3.62	0.06	0.62	4	0.75	1.06	0.55	0.12	0.37	2.17	F07	M8	18
2 1/2"	2.50	7.50	6.38	19.49	7.00	5.50	4.12	0.06	0.69	4	0.75	1.81	0.96	0.12	0.67	2.76	F10	M10	31
3"	3.00	8.00	6.77	19.49	7.50	6.00	5.00	0.06	0.75	4	0.75	1.81	0.98	0.12	0.67	2.76	F10	M10	40
4"	4.00	9.00	7.76	23.43	9.00	7.50	6.19	0.06	0.94	8	0.75	2.05	1.18	0.12	0.67	2.76	F10	M10	60
6"	6.00	15.50	11.06	31.50	11.00	9.50	8.50	0.06	1.00	8	0.88	2.68	1.61	0.12	0.91	3.35	F12	M12	165
8"	8.00	18.00	12.48	43.31	13.50	11.75	10.62	0.06	1.12	8	0.88	2.68	1.61	0.12	0.91	3.35	F12	M12	282

KTM SB-11 ASME Floating Ball Valves

Two piece split body ball valve

Pressure - Temperature Rating (E-Seat)



- ① Valve Size 15mm to 20mm (1/2" to 3/8")
- ② Valve Size 25mm to 65mm (1" to 2 1/2")
- ③ Valve Size 80mm to 100mm (3" to 4")
- ④ Valve Size 150mm (6")
- ⑤ Valve Size 200mm (8")

New KTM Model Coding System

1	2	3	—	4	•	5	6	7	8	9
SB11				32		1E	A15	SF	25	GG
Valve Code	Sub Code	Special Feature		Body Code		Trim Code	Flange Code	Connection Code	Size Code	Option Code

Example. SB11 - 32 • 1E A15 SF 25 GG

1	Valve Code	Class	Description
SB11	ASME 150	Full bore, Floating type	

2	Sub Code	Description
Blank	Soft seat	

3	Special Features	Description
Blank	No Special Feature	

4	Body Code	Material
31	A351(G) CF8	
32	A351(G) CF8M	
62	A216 (G) WCB	

5	Trim Code	Ball	Seat	Packing Stem
1E ¹	A351(G) CF8M	PTFE/PFA Copolymer	PTFE	316
5E ²	A351(G) CF8M	PTFE	PTFE	316

¹ For Body Code 32 only
² For Body Code 31 and 62 only

6	Flange Code	Description
A15	ASME Class 150	

7	Connection Code	Description
SF	Smooth Finish 125 to 250 AARH	

8	Size Code	mm	inch
15	15	1/2	
20	20	3/4	
25	25	1	
40	40	1 1/2	
50	50	2	
65	65	2 1/2	
80	80	3	
100	100	4	
150	150	6	
200	200	8	

9	Option Code	Description
Blank	No additional option	
GG	Packing/Gasket-Graphite	